

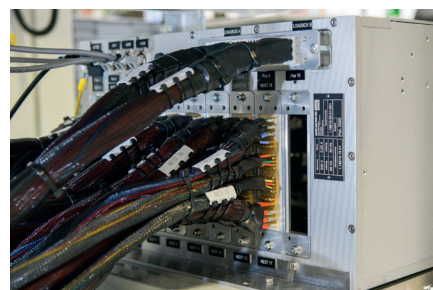
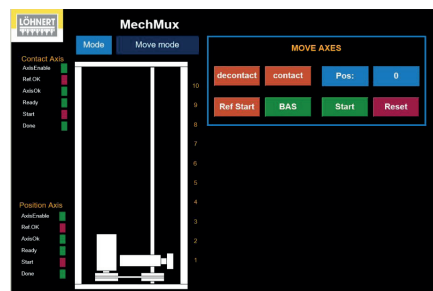
19 inch format

Mechanical 10x multiplexer L19619



- Potential-free switching 10:1
- Alternative to relay multiplexer
- 90 contacts with up to 50A
- Application: Environmental testing of several modules

With a compact structure and in the familiar 19 inch format, our 10x multiplexer enables the operation of up to 9 contacts using a master connector. The standard contact design provides 90 contacts per slot with 3 different current ratings (max. 50A/max. 30A/max. 8A). The multiplexer is fully automatic and can be operated via an external interface (TCP/IP) or via web visualisation.



Product information

Format:	19 inch 6u Depth approx. 600mm
Contacts:	10 slots, including 1 optional slot for maintenance Contacts made of peek material Square pins with soldering connection (Ingun) Standard configuration of contacts per slot <ul style="list-style-type: none">• 24x max. 50A• 16x max. 30A• 50x max. 8A ODU master connector Customised contacts design can be supplied
Status displays	3 indicator lights on the front red = Error/Reset white = Control on green = Contacted
Operating modes	Automatic operation Manual operation Positioning mode Teach mode
Operating the appliance	Operation via web visualisation Energy consumption
External operation via TCP/IP command sets	Maximum current approx. 250 mA Idle state approx. 135 mA
Connections	Power supply 230V/50Hz via power socket 3x RJ45 connectors for external communication
Miscellaneous	Readout of error messages possible Spindle drive with belt Electrical cylinder for contacting Speed position change from slot to slot approx. 4s